

KUBOTA MINI-EXCAVATOR

# KX61-3



WINCHESTER

01962 851155

SALISBURY

01722 341155

SOUTHAMPTON

02380 667666

***Suppliers of Plant & Access Hire Equipment***

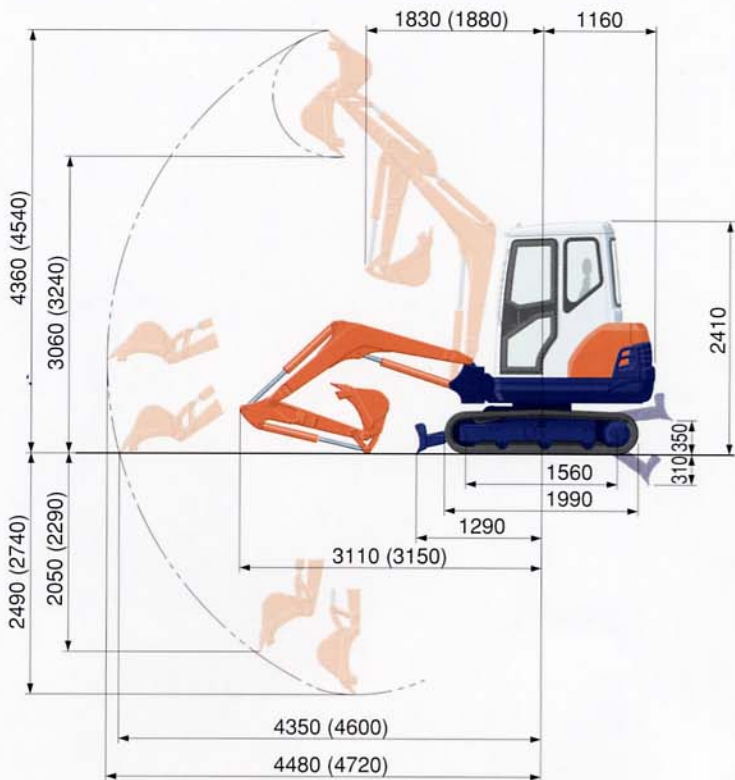
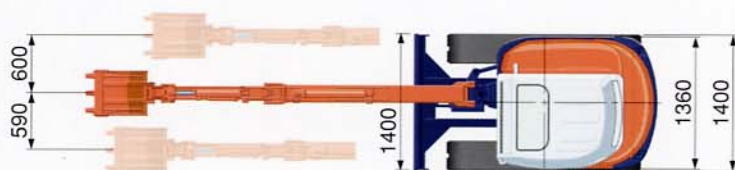
**Kubota**

# SPECIFICATIONS

\*Rubber shoe type

Machine weight	Cabin (Std. arm/Long arm) kg	2590/2600	
	Canopy (Std. arm/Long arm) kg	2485/2495	
Bucket capacity, std. SAE/CECE	m <sup>3</sup>	0.06	
Bucket width	with side teeth mm	475	
	without side teeth mm	450	
Engine	Model	VI 505-E2-BH-9EU	
	Type	Water-cooled, diesel engine	
	Output ISO9249	PS/rpm	24.8/2100
		kW/rpm	18.2/2100
	Number of cylinders		4
	Bore x stroke	mm	78 x 78.4
Displacement	cc	1498	
Overall length (Std. arm/Long arm)	mm	4270/4310	
Overall height	Cabin mm	2410	
	Canopy mm	2430	
Swivelling speed	rpm	9.5	
Rubber shoe width	mm	300	
Tumbler distance	mm	1560	
Dozer size (width x height)	mm	1400 x 300	
Hydraulic pumps	P1,P2	Variable displacement pump	
	Flow rate ℓ/min	29.4+29.4	
	Hydraulic pressure MPa(kgf/cm <sup>2</sup> )	22.6 (230)	
	P3	Gear pump	
	Flow rate ℓ/min	16.8	
Max. digging force	Arm (Std./Long) kN (kgf)	14.7/12.4 (1500/1265)	
	Bucket kN (kgf)	21.5 (2190)	
Boom swing angle (left/right)	deg	80/60	
Auxiliary circuit	Flow rate ℓ/min	46.2	
	Hydraulic pressure MPa(kgf/cm <sup>2</sup> )	17.2 (175)	
Hydraulic reservoir	ℓ	34	
Fuel tank capacity	ℓ	45	
Max. travelling speed	Low km/h	2.8	
	High km/h	4.4	
Ground contact pressure	Cabin kPa(kgf/cm <sup>2</sup> )	23.1 (0.236)	
	Canopy kPa(kgf/cm <sup>2</sup> )	22.1 (0.225)	
Ground clearance	mm	305	

# WORKING RANGE



( ) : Long Arm  
Unit: mm

# LIFTING CAPACITY

KX61-3(CAB) with standard arm:

kN (ton)

Lift Point Height	Lifting point radius (2.5m)			Lifting point radius (3.5m)		
	Over-front		Over-side	Over-front		Over-side
	Blade Down	Blade UP		Blade Down	Blade UP	
2.0m	7.00 (0.71)	7.00 (0.71)	6.81 (0.69)	6.04 (0.62)	5.19 (0.53)	4.12 (0.42)
1.5m	8.65 (0.88)	8.55 (0.87)	6.61 (0.67)	6.38 (0.65)	5.13 (0.52)	4.07 (0.42)
1.0m	10.28 (1.05)	8.30 (0.85)	6.40 (0.65)	6.80 (0.69)	5.06 (0.52)	4.01 (0.41)
0m	11.62 (1.19)	8.10 (0.83)	6.17 (0.63)	7.17 (0.73)	4.97 (0.51)	3.92 (0.40)

KX61-3(CAB) with long arm:

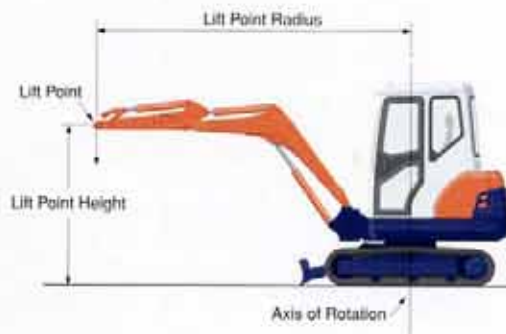
kN (ton)

Lift Point Height	Lifting point radius (2.5m)			Lifting point radius (3.5m)		
	Over-front		Over-side	Over-front		Over-side
	Blade Down	Blade UP		Blade Down	Blade UP	
2.0m	5.95 (0.61)	5.95 (0.61)	5.95 (0.61)	5.46 (0.56)	5.22 (0.53)	4.15 (0.42)
1.5m	7.63 (0.78)	7.63 (0.78)	6.70 (0.68)	5.90 (0.60)	5.15 (0.53)	4.09 (0.42)
1.0m	9.44 (0.96)	8.35 (0.85)	6.45 (0.66)	6.42 (0.65)	5.07 (0.52)	4.01 (0.41)
0m	11.48 (1.17)	8.02 (0.82)	6.14 (0.63)	7.13 (0.73)	4.93 (0.50)	3.88 (0.40)

Please note:

\* The lifting capacities are based on ISO 10567 and do not exceed 75% of the static lift load of the machine or 87% of the hydraulic lifting capacity of the machine.

\* The excavator bucket, hook, sling and other lifting accessories are not included on this table.



\* Working ranges are with Kubota standard bucket, without quick coupler.

\* Specifications are subject to change without notice for purpose of improvement.