

# panoramic

# P30.9 EVX



Merlo's compact stabilisers increase stability & capacity. Frame levelling and sideshift add precision & safety.

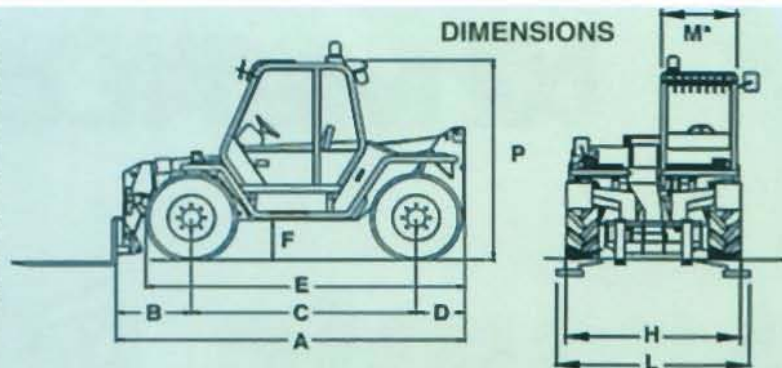


Merlo's unique 'Ring of Steel' protects against site damage and increases stability.

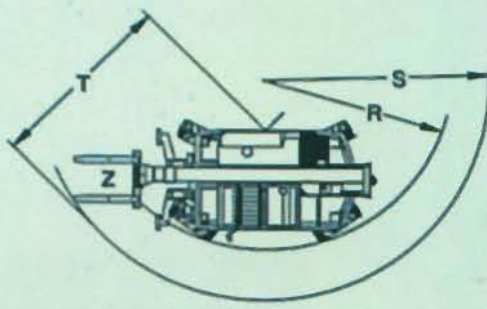


A	mm	4550
B	mm	1030
C	mm	2750
D	mm	570
E	mm	3820
F	mm	450
H	mm	2220
M	mm	940
P	mm	2440
R	mm	3810
S	mm	4570
T	mm	3560
Z	mm	850

\*Internal width



## OUTSTANDING MANOEUVRABILITY



## WEIGHTS

Machine weight with forks kg 7380

## PERFORMANCES

Max. lift capacity	kg	3000
Max. lift height	mm	9400
Max. reach	mm	5980
Max. height at full capacity	mm	7850
Max. reach at full capacity	mm	3000
Max. capacity at full height	kg	2700
Max. capacity at full reach	kg	1350
Tear-out force with 800 l bucket	kg	4230
Drawbar pull	kg	5850
Carriage rotation	deg	140

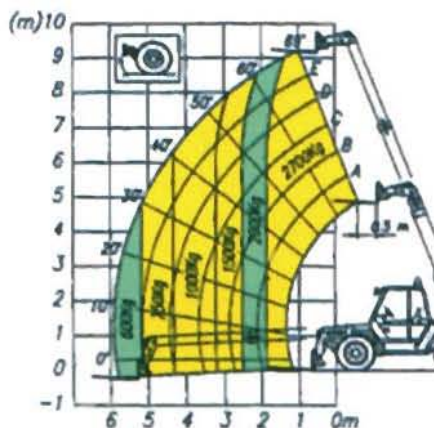
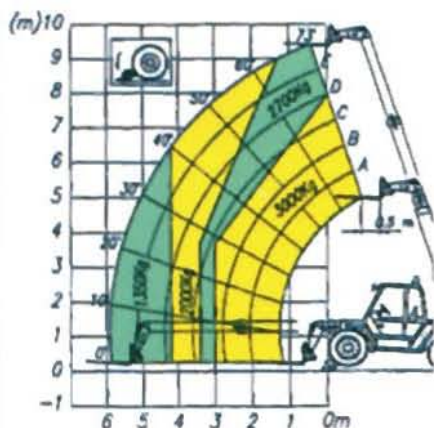
## OPERATING TIMES

Boom lift	sec	8.5
Boom lower	sec	7.5
Boom extend	sec	9
Boom retract	sec	8
Full carriage tilt	sec	5
800 l bucket dump	sec	1.5

## TRAVEL SPEED

1st gear	kph	7
2nd gear	kph	25

## P30.9 EVX SPECIFICATION



Lift capacities at 500mm load centre. FEM4001r EN 1459 Annex B

## OPERATOR'S CAB

Structure complies with EEC directives 86/295 (ROPS) and 86/296 (FOPS). The cab is mounted on rubber anti-vibration blocks and fitted with noise dampening panels. Front and rear screens are fitted with wipers and can be opened for additional ventilation. Boom and carriage are operated by "4 in 1" joystick lever. Instrumentation includes: Tachometer/Revolution counter, hour meter, fuse box, annunciator panel showing blocked engine air filter, hydrostatic oil level and temperature, engine oil pressure, coolant temperature, parking brake warning light. Centralised pressure test gauge. Also standard is a cab heater/demister/pressurisation system and a courtesy light.

## SAFETY SYSTEMS

An overload warning device activates both audio and visual signals and locks overloading actions. Automatic lock of frame levelling and stabilisers when boom exceeds the preset safety angle. Safety lock valves are incorporated in all hydraulic cylinders. A reversing bleeper is fitted. Engine cover lock. Fire extinguisher mountings in the cab. Seat belt.

## BOOM SIDE-SHIFT

A MERLO patented chassis side-shift is fitted allowing  $\pm 110$ mm of carriage side-shift with boom fully retracted or  $\pm 265$  mm if boom is fully extended.

## BOOM

A three section boom made from high yield steel and telescoping on anti-friction, externally adjusted pads. The double extension cylinder is protected by mounting inside the boom.

## FRONT STABILISERS

Hydraulic independent control. Compact design adds little

to overall width, and stabilisers are easily visible from the cab. Axle mounted, does not interfere with sideshift or frame levelling functions.

## FRAME LEVELLING

Hydraulically actuated axle tilt permits chassis and boom levelling for best lift performance and safety. Its action can be combined with that of the stabilisers.

## CARRIAGE

A "TAC-LOCK" carriage (for attachment of attachments from inside the cab) is fitted, with two hydraulic service lines, providing a double acting service.

## PALLET FORKS

1200 mm long, section 130 x 45 mm. Centre to centre fork distances, manual adjustment, from 450 to 1050 mm spacing.

## STEERING

Hydraulically powered with automatic wheel resynchronisation in case of misalignment. Three steering modes:

- All wheel steer
- Front wheel only steer
- Crab steer

## ENGINE

4 cylinder PERKINS 1004-4 Diesel engine with direct injection and water cooling 61.5 kW (83 Hp) at 2400 rpm (ISO3046/1).

## TRANSMISSION

Hydrostatic closed circuit type with automatic stepless speed regulation. Inching pedal. Two speed gearbox. Permanent four wheel drive through differential and hub reduction gears. Front axle is mounted rigidly, the rear axle oscillates.

Dropped hubs of the crown and pinion reduction type for improved ground clearance.

## BRAKES

Hydraulically activated disc brakes on all four wheels, mounted on differential output shafts. Fail-safe parking disc brake hydraulically controlled on main propshaft.

## SERVICE HYDRAULICS

Gear pump.  
Maximum flow: 91 l/min  
Operating pressure: 210 bar  
40 micron filter on return line

## ELECTRICS

12 V system with 110 Ah battery and 65 A alternator. Full road lighting and flashing beacon.

## CAPACITIES

Hydraulic oil: 95 l  
Diesel fuel: 155 l  
Hydrostatic oil: 12 l  
Engine oil: 8.5 l  
Coolant: 12.0 l

## TYRES

400/70-20 14 PR on both axes, mounted on 8 stud disc

## OPTIONS

16/70-20 14 PR semi-industrial profile tyres  
Rear differential lock.  
Rear PTO.  
Front screen guard.  
Roof window wiper.  
Pre-arrangement for mixing shovel.

## MERLO UK LTD

Headlands Business Park, Salisbury Road  
RINGWOOD BH24 3PB  
Tel: 01425-480806 Fax: 01425-477478  
email: sales@merlo.co.uk website: www.merlo.co.uk

## MERLO SpA Industria Metallmeccanica

12020 S DEFENDENTE DI CERVASCA (CN)  
Italy  
Tel: +39 0171-614111 Fax: +39 0171-614100  
email: info@merlo.com website: www.merlo.com